

 **SUNFLOWER TRIMMER®**
TRIMMING IS EASY

AUTOMATIC - XL



**USER MANUAL
and
WARRANTY FORM**

USER MANUAL AND WARRANTY FORM


AUTOMATIC TRIMMER XL



1. Potential risks and safety warning	2
1.1 Protective equipment	2
1.2 Machine unpacking and installation	3
1.3 Other risks and recommendations	6
2. Machine basic description	7
2.1 General information	8
2.2 Range of use	8
2.3 Electrical connection	8
3. Operating and handling	
3.1 Connection to power source	9
3.2 Leveling and start up	9
3.3 Rotor / cutting blade adjustment	11
3.4 Flowers infeeding	12
3.5 Cleaning during work	13
3.6 Tumbler exchange	14
4. Cleaning	16
5. Storage	16
6. Warranty	18

1. POTENTIAL RISKS AND SAFETY WARNING

The trimmers from company Sunflower-trimmer Ltd. are designed and manufactured according to the legal standards of EU focusing on maximum safety of the user during work with the machine. The user is obligated to read and understand the safety warning and recommended procedures specified in this manual.

 Please read this manual carefully before use of the machine.

1.1 PROTECTIVE EQUIPMENT

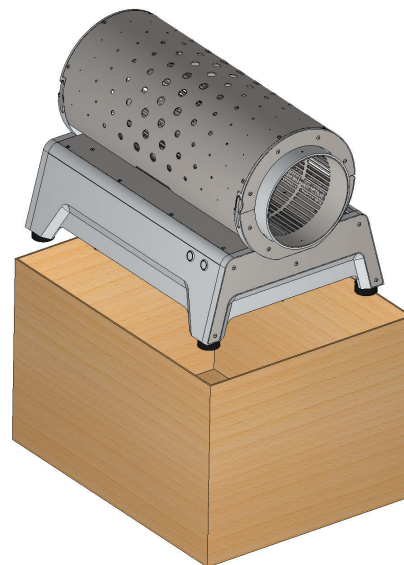
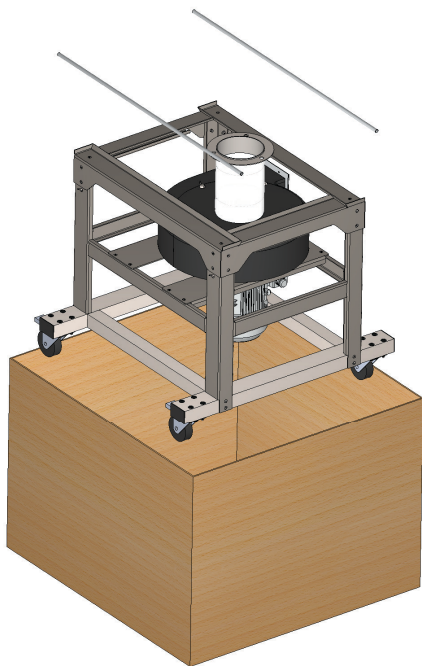


Safety goggles
Use plastic goggles with non-tinted visor and without a UV filter. There is a risk of cut pieces of the flower flying away and causing injury to your eyes.

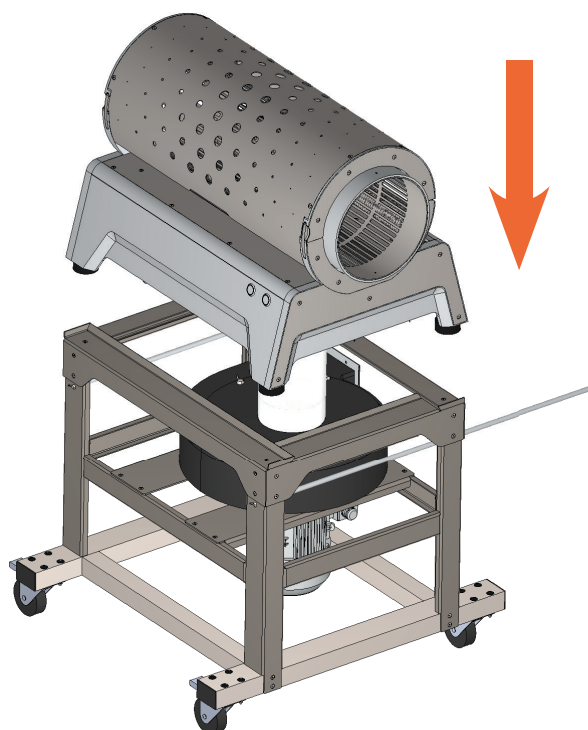
1.2 MACHINE UNPACKING AND INSTALLATION

When unpacking the machine out of the box please follow the instruction below:

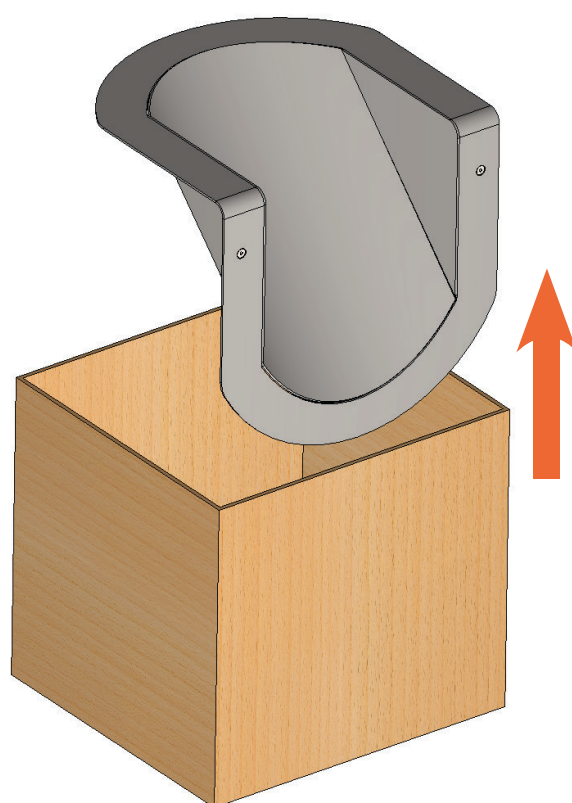
1. Unpacking of the ventilator table 2. Unpacking of the machine



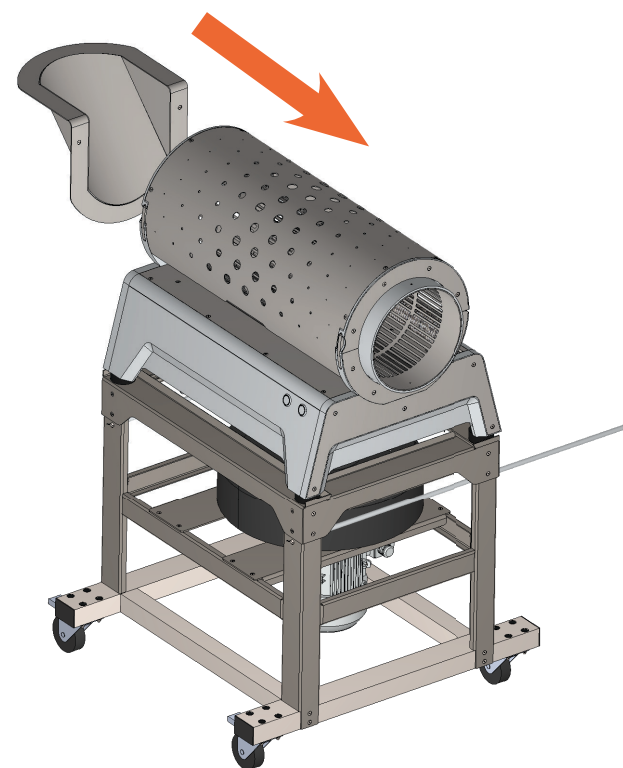
3. Installation of the machine on the table



4. Unpacking of the chute

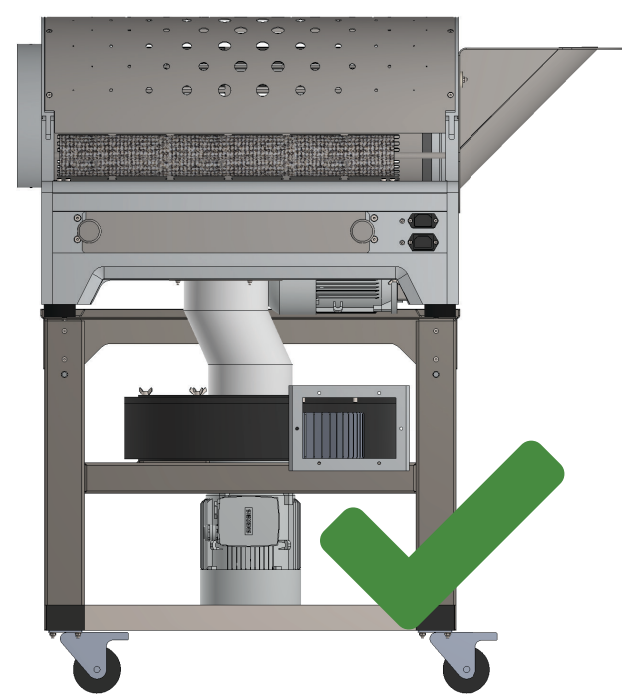
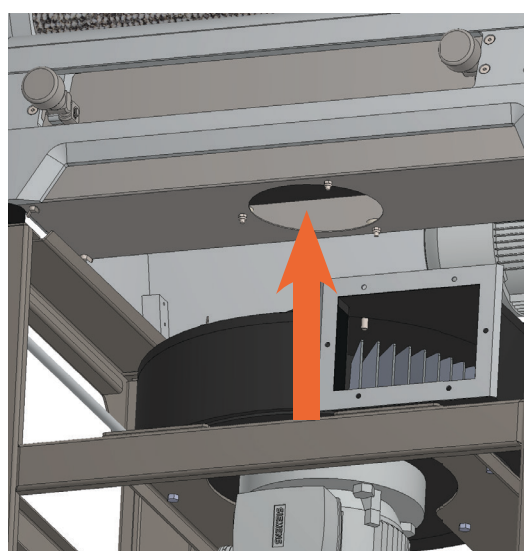


5. Mounting of the chute



6. Ventilator connection

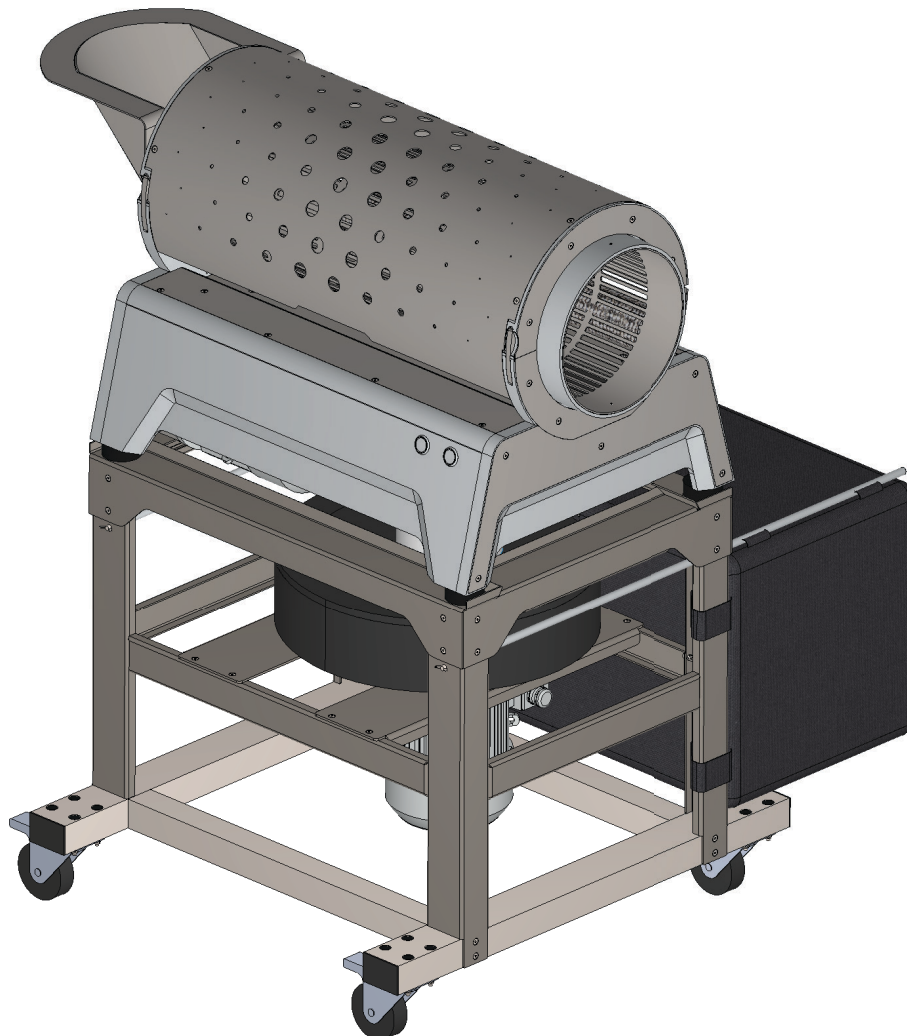
Connect the ventilator to the machine via the plastic hose.



7. Bag installation



8. Machine assembly completed



1.3 OTHER RISKS AND RECOMMENDATIONS

Keep in mind your own safety at all time. Do not use the trimmer in a dusty or wet environment. The electromotor is not water resistant.

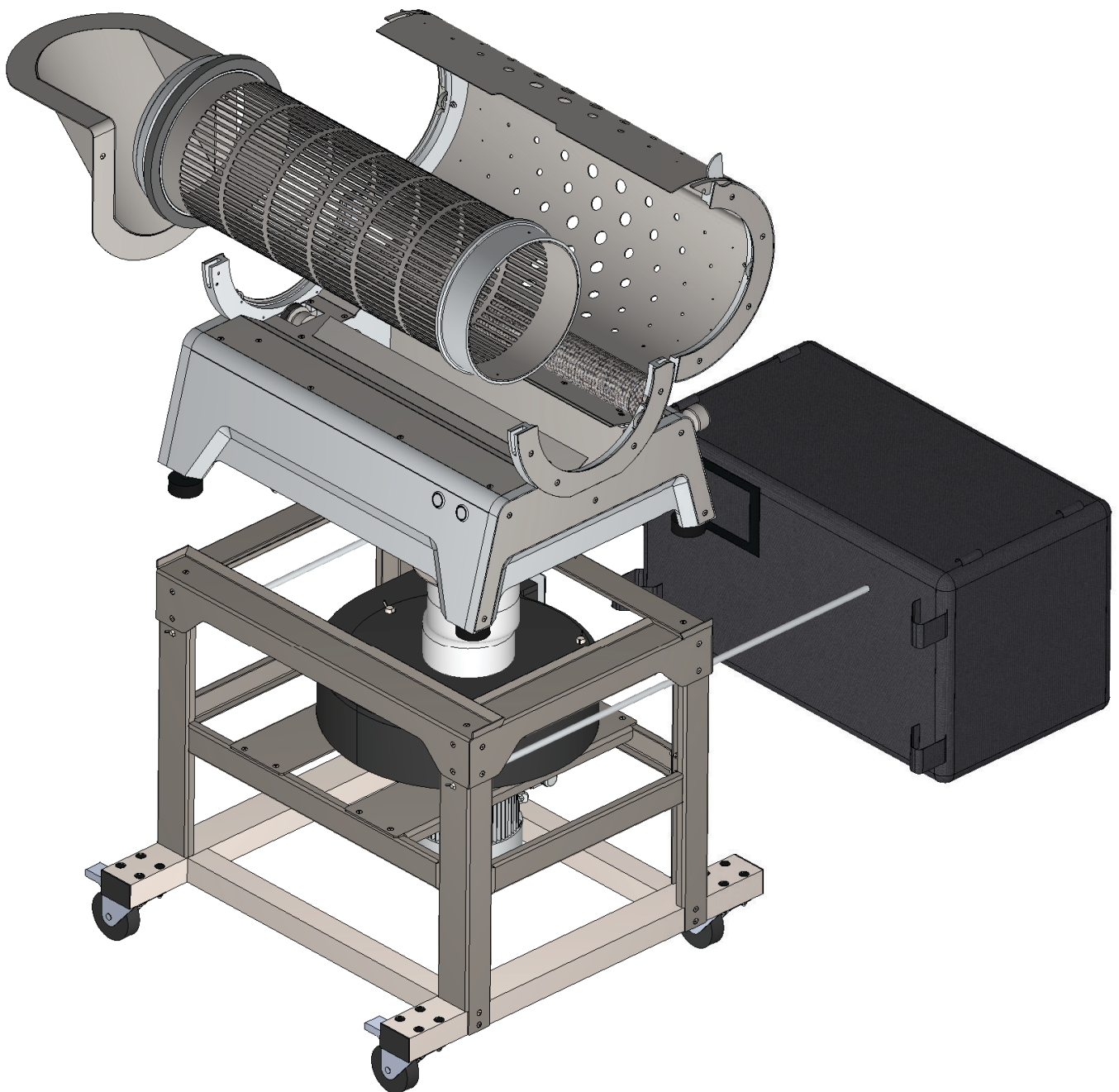
- ❗ Never touch or open the top cover when the motor and the rotor is rotating.
- ❗ Never open the top cover of the machine when the motor and rotor is rotating.
- ❗ Never leave the trimmer in the reach of children or persons under the age of 18 or those who are not familiar with the user manual.

- Clean the trimmer machine according to the specifications under the chapter **4. Cleaning**.
Following these instruction you can prevent the damage of the machine or harm to your own health.
- The machine can only be used for purposes specified in this manual, chapter 2.
Machine basic description – point **2.2. Range of use!**
- Never repair or exchange any part of the trimmer in case of malfunction.
- Keep the machine clean and it's storage place clean.
- The trimmer machine can be used in interior only.
The use in exterior is not recommended. The trimmer is not water resistant!
- Pay attention to avoid damage to the electrical cables of the machine.
- Never reposition the machine when plugged to the power source!

2. MACHINE BASIC DESCRIPTION

The AUTOMATIC -XL trimmer machine is developed and build for you to speed up the cutting of leaves from the flowers.

The frame is made of aluminum sides. A stainless steel casing is attached to the frame of the device. The motor is located outside the device. Next to the motor there is a rotor of the cutter together with an adjustable knife. The whole device stands on adjustable silent blocks.



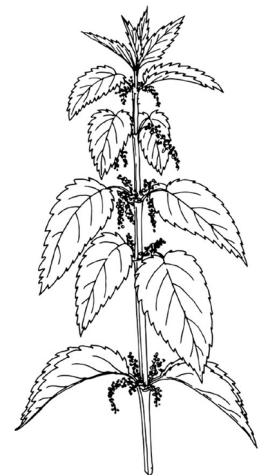
2.1 GENERAL INFORMATION

- The ON / OFF switch is positioned on the front of the trimmer.
- The button to the left from ON / OFF switch starts up the ventilator.
- You can adjust the distance between the blade and cutting rotor using two handling wheels. You can read more about the cutting mechanism adjustment in the chapter **3.3 - Rotor / cutting blade adjustment**.
- The electrical connection and the electrical parts are closer described in this chapter under the point **2.3 Electrical connection**.

The machine is designed for cutting of the flower petals from most of aromatic flowers. The petals are cut automatically in the upper frame of the machine. The flower petal goes through the tube grid placed in the upper frame. the petal is then cut in the cutting system of the machine. The flowers are turning in the tube and moving fluently towards right to the end of the machine. The cut leaves are sucked up by ventilator and flow into the waste bag.

2.2 RANGE OF USE

- The machine can be used only for purposes specified by the manufacturer.
- We strongly advise you to read all safety warnings before use of the trimmer!
- The machine is designed to remove the leaves from the flowers of plants.
- The machine can only be used on fresh plants with fleshy leaves and stalks which contains no ligneous and solid parts. This means you can cut the plants whose composition and solidity is similar to e.g. freshly harvested nettle.



2.3 ELECTRICAL CONNECTION

The trimmer contains electrical parts and connections. Electrical connection means cables and other parts connecting the electrical devices. The machine contains following electrical parts: Electromotor 250 W, start up capacitor 20 μ F, 2x power switch and 2x euro connector. The power cable for power source connection is included in the package. The ventilator output power is 750 W.

! We particularly advise you to pay close attention to your safety during work and maintenance of your trimmer. You should not get in contact with electrical connection when using or cleaning the machine. Do not alter or reconnect the electrical connection!

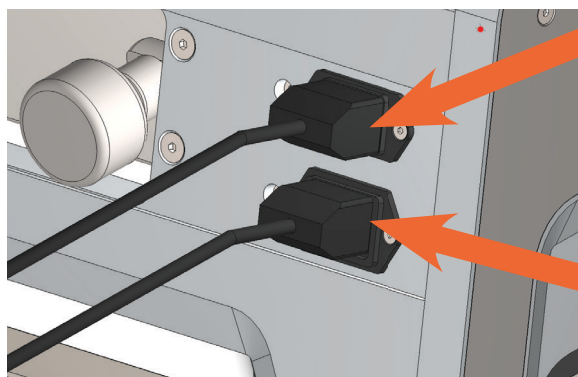
3. OPERATION AND HANDLING

3.1 CONNECTING TO THE POWER SOURCE

Before you connect the trimmer to the power source make sure you executed all safety precautions stated above.

! Before connecting, make sure that the cover is correctly attached to the upper frame!

Connecting the machine to the power source and connecting the ventilator to the machine



Euro konektor 1

The connector for the power input is on the side of the trimmer.

Connect the proper end of the power cable into the euro-connector. Connect the other end of the cable into wall socket.

Euro konektor 2

Serves for the ventilator connection.

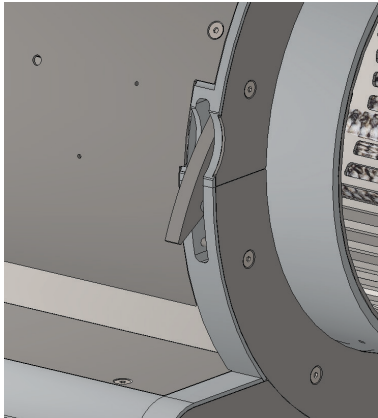
3.2 LEVELING AND START UP

We recommend to set up the machine to be inclined a bit using the adjustable legs.

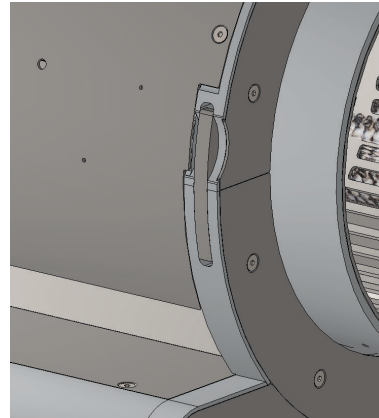


Make sure that the locking levers are in the correct position!

i Do not power on the machine without levers in the "locked" position

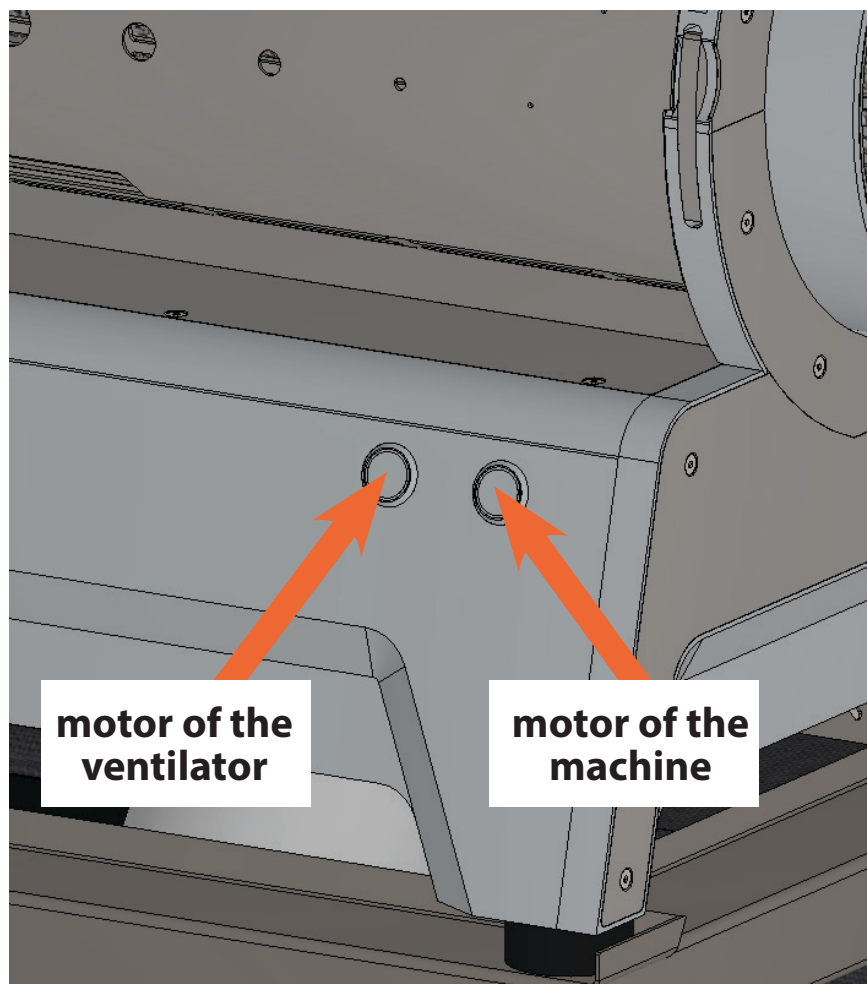


! unlocked



✓ locked

**The machine starts up by the right power on button.
The ventilator starts up by the left power on button.**

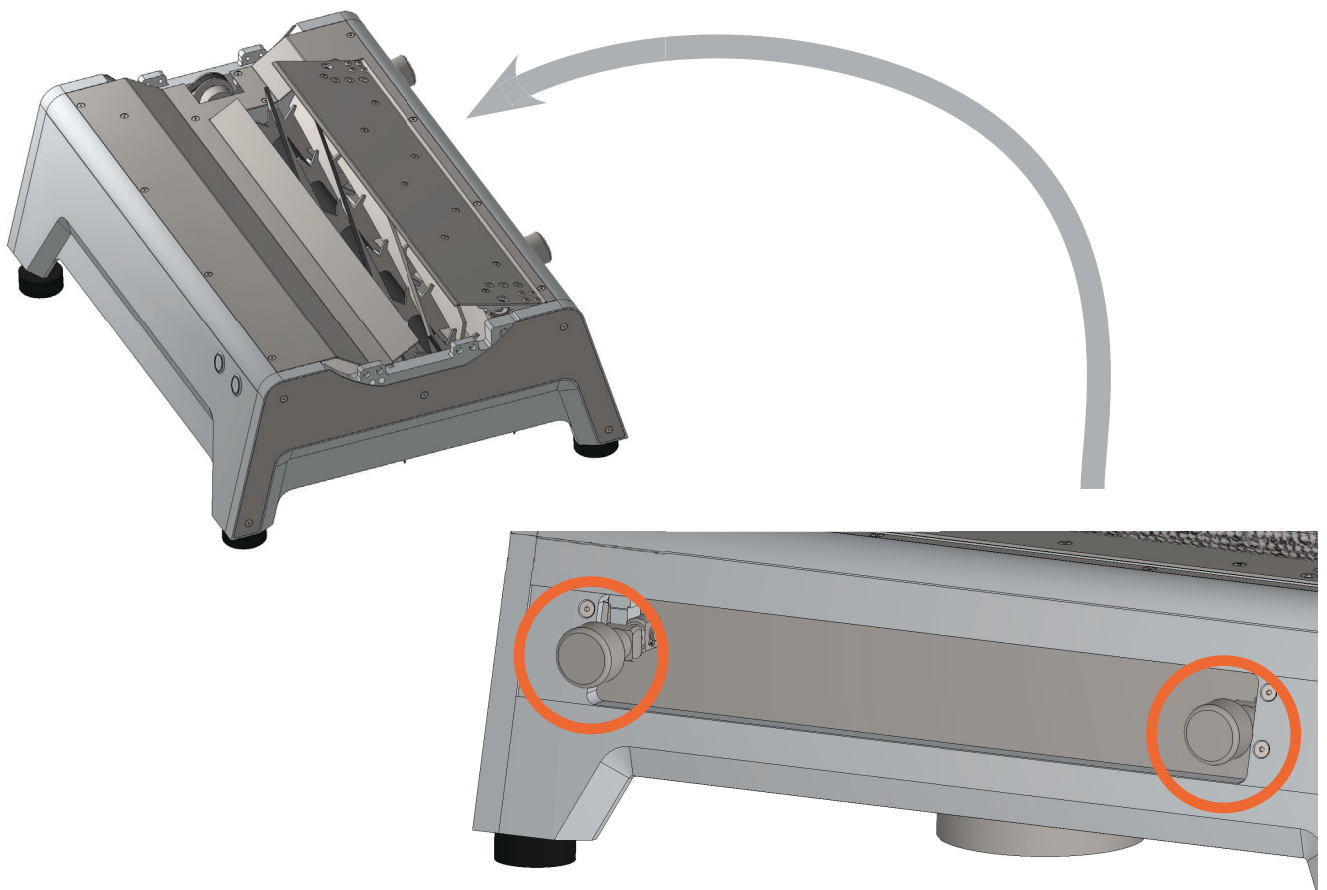


i Keep in mind all the safety precautions stated above during power on of the trimmer!

3.3 ROTOR AND CUTTING BLADE ADJUSTMENT

Your new machine is set up and adjusted from the manufacturer. To ensure the proper functionality and durability please pay attention to the following instructions:

i Always remove the top cover in order to adjust the cutting blade!



1. The cutting blade is adjusted to the rotor using the two handling wheels positioned on the back of the machine.

2. Rotating the wheels to the right moves the blade to the rotor making the gap between the blade and rotor smaller. Always turn the wheels not more than $\frac{1}{4}$ of the circle. Pay close attention during the process.

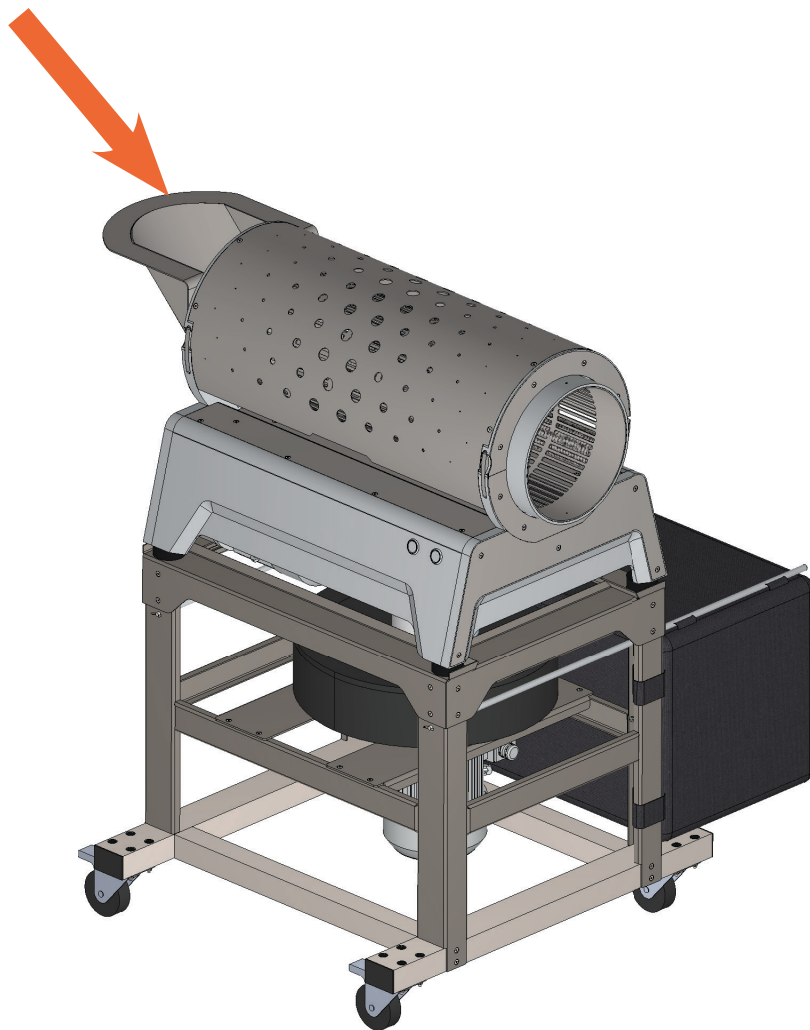
3. You can test the optimal position with piece of paper. Insert the paper between the rotor and cutting blade. Turn the rotor carefully. If the paper is cut, turn the handling wheel by $\frac{1}{4}$ turn to the left and leave it in this position.

4. The cutting blade has to be adjusted from both ends using the two handling wheels – see picture from the back of the trimmer where the two handling wheels are positioned.

! Always make sure the rotor and cutting blade are not in collision with each other.

3.4 FLOWERS INFEEEDING

The flowers are inserted into the machine using the black chute.



i Never insert dirty flowers into the machine. Insert only clean flowers without stalks or other parts which could damage the machine.

3.5 CLEANING DURING WORK

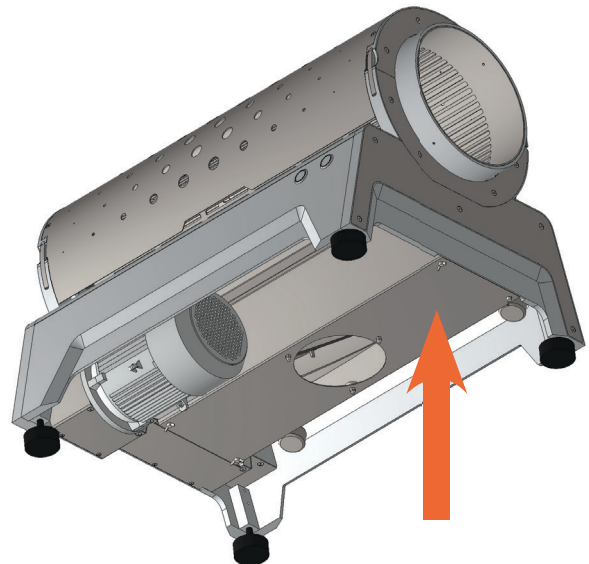
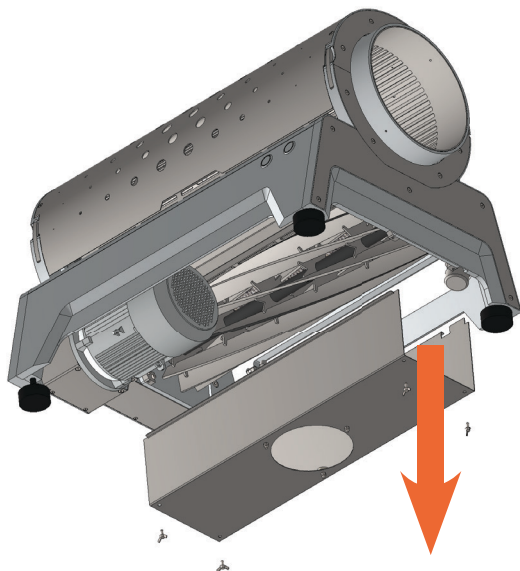
We recommend to clean the cutting blades edge, the rotor and the upper frame.

i Always disconnect the machine from the power source before cleaning!

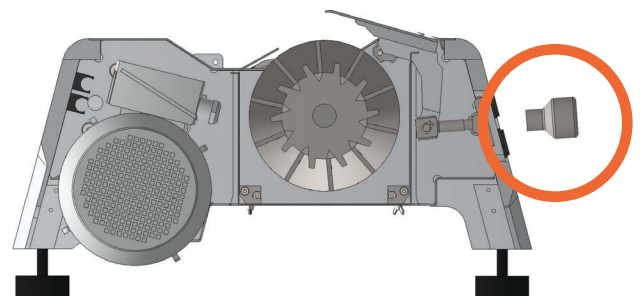
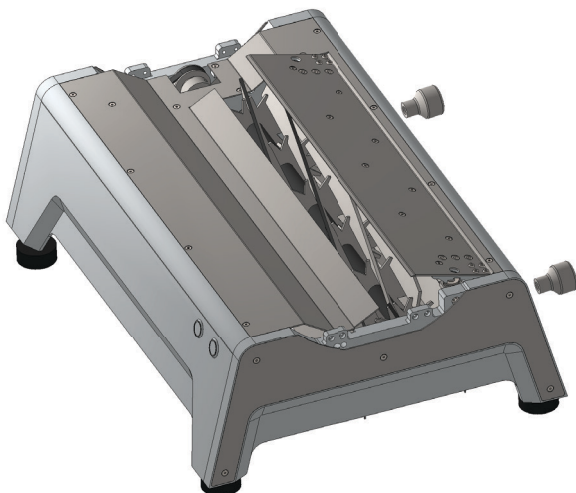
We don't recommend cleaning the surface with hard materials, especially iron tools! There is a risk of damage to the surface which may result in corrosion!

i Pay close attention to avoid injury from contact with sharp parts of the machine!

Cleaning of the rotor

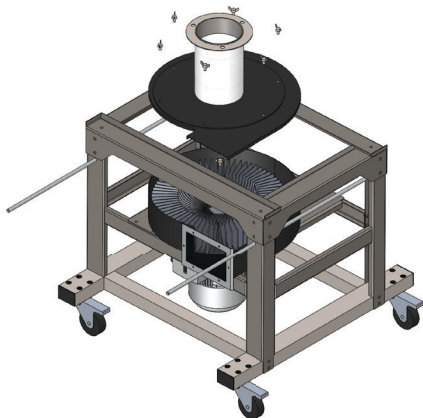


Cleaning of the cutting blade



i Before cleaning of the knife unscrew the knob so that the knife can be tilted.

Cleaning of the ventilator



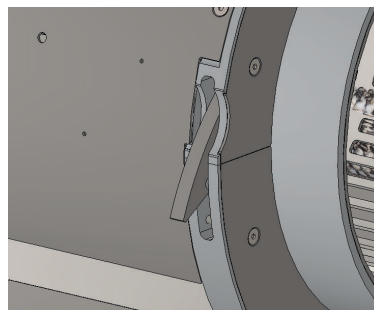
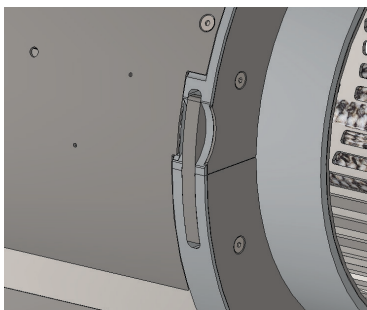
i Before cleaning of the ventilator unscrew the winged screws and remove the upper flange from the ventilator.

3.6 TUMBLER EXCHANGE

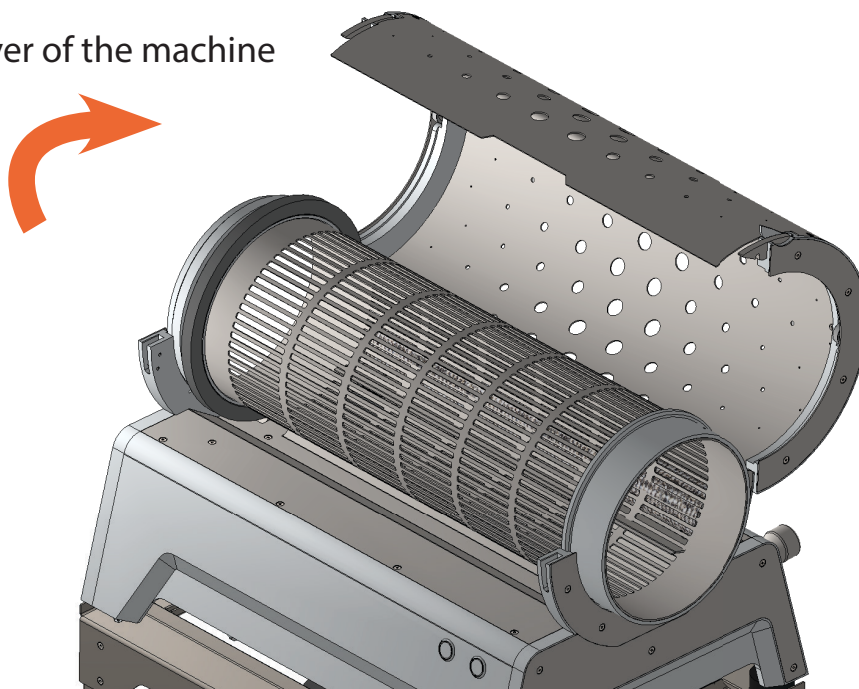
Use maximum caution when exchanging the tumbler and follow these instruction:

i Make sure the machine is unplugged from electricity and its parts are not moving.

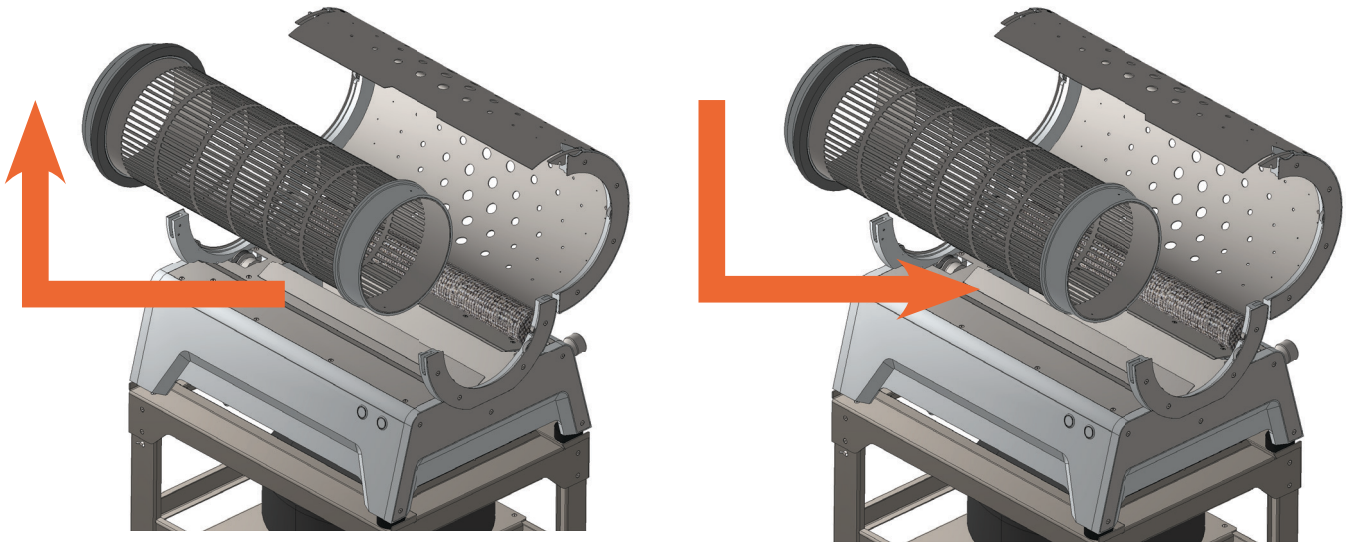
1. Unlock the locks



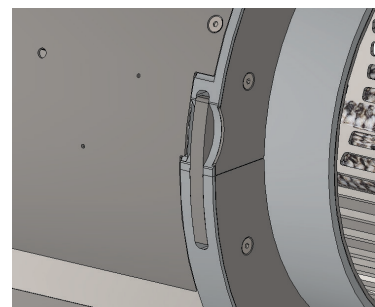
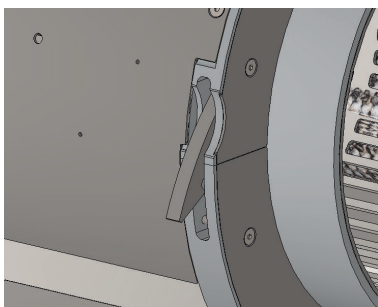
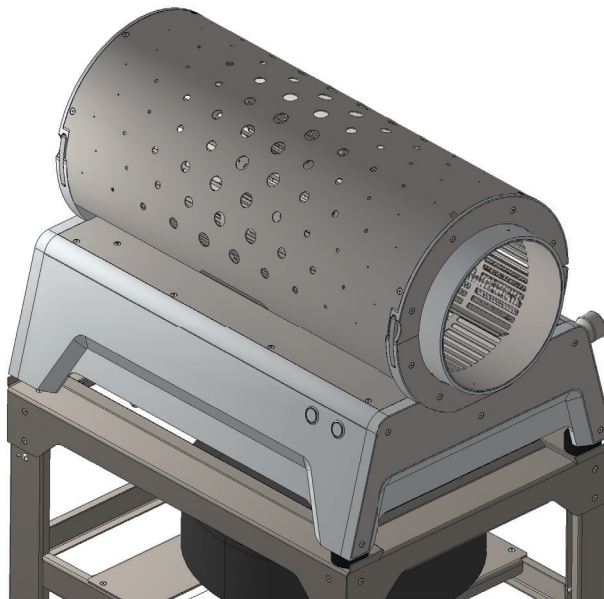
2. Open the upper cover of the machine



3. Remove the tumbler and insert a new one



4. Close the upper frame of the device
and secure the locks in the correct position



4. CLEANING

After each use of the trimmer we recommend the following:



- Clean all the dirty spots on the machine using alcohol-based cleaner or other solvent.
- Make sure that no cut pieces of the plant get outside of the cutting area.
- Clean the rotor of the ventilator.
- Empty the waste bag.

5. STORAGE

Store your machine in a clean and dry place!



AUTOMATIC TRIMMER XL

Trimming has never been easier!



efficient



fast & reliable



light & compact



6. WARRANTY FORM

In order to acquire a 5 year warranty according to our warranty conditions available on www.sunflower-trimmer.com it's necessary to complete the following:

- Fill out and keep the warranty form.
- Complete the warranty form with stamp of the seller and date of purchase.
- Send a confirmation of purchase to: **info@sunflower-trimmer.com** latest within 30 days from the date of purchase.
Include name of the retailer, date of purchase and serial number of the machine.
- You will receive a confirmation by email within one week.

Model of the machine

AUTOMATIC - XL

Serial number:

Stamp Sunflower-Trimmer, s.r.o.:

Stamp seller:

Sunflower-Trimmer, s.r.o.

Kaprova 42/14

110 00 Praha

The Czech Republic

tel.: +420 602 418 139

e-mail: info@sunflower-trimmer.com

www: info@sunflower-trimmer.com

Made in the Czech Republic



WWW.SUNFLOWER-TRIMMER.COM